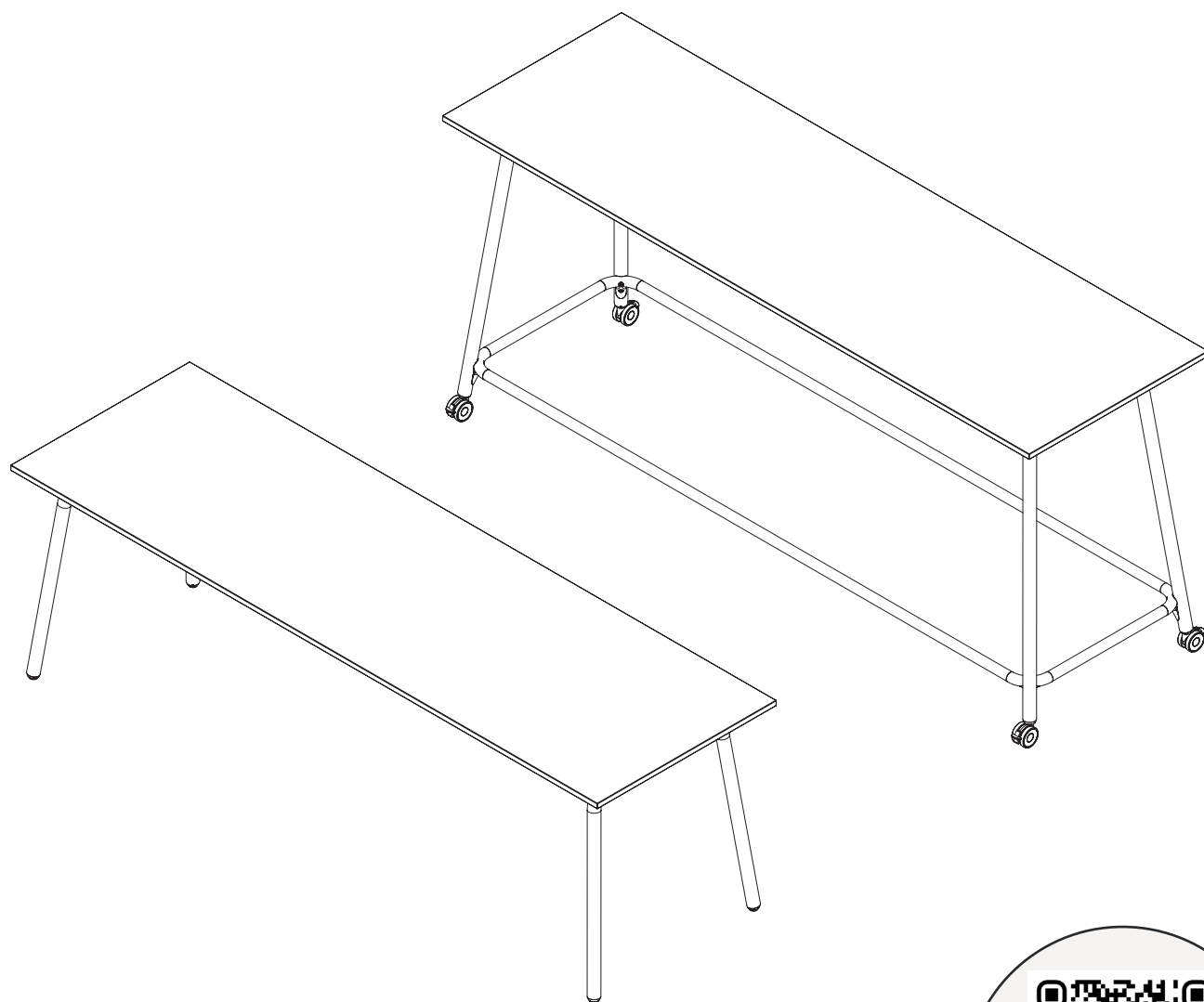


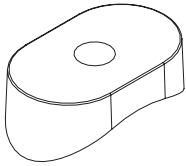
# ASSEMBLY

## Allé Work Desk and Meet Table

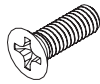


View Digitally

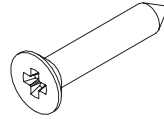
# Hardware



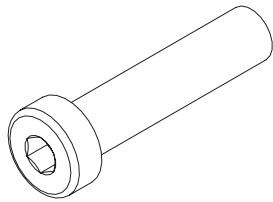
Space, Selab Work/Meet/  
Might MT  
(0002813)



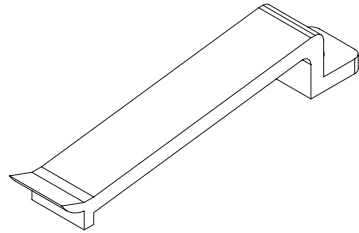
Screw M4-0.7 x 12MM  
Flat Head  
(0000879)



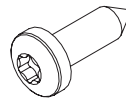
Screw, Wood #9 x 1"  
Flat Head  
(0002783)



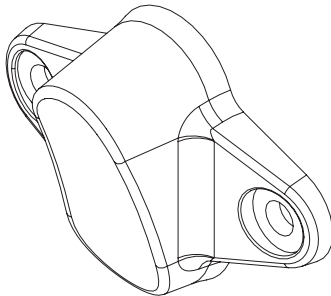
Screw, M8-1.25 x 35MM  
(0002629)



Clip, Single Side  
Wire Manager  
(486911)

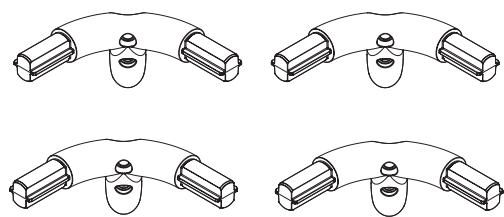


Screw #10 x 5/8 BK, Torx  
(0002148)

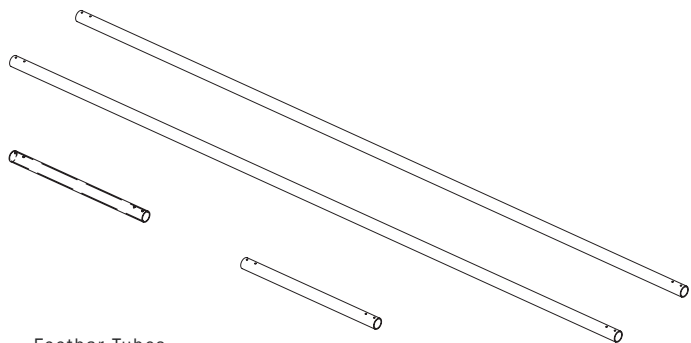


Side Support, Selab  
(0002814)  
Optional

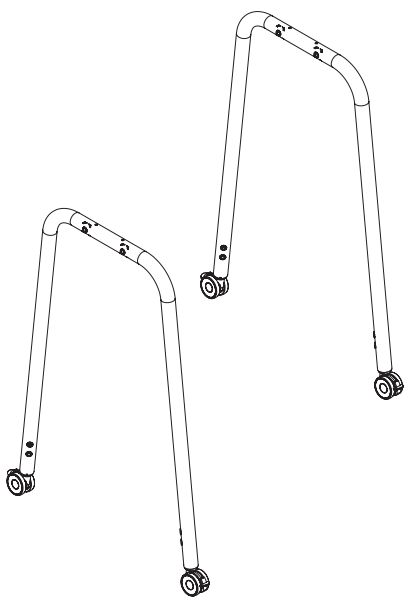
# Components



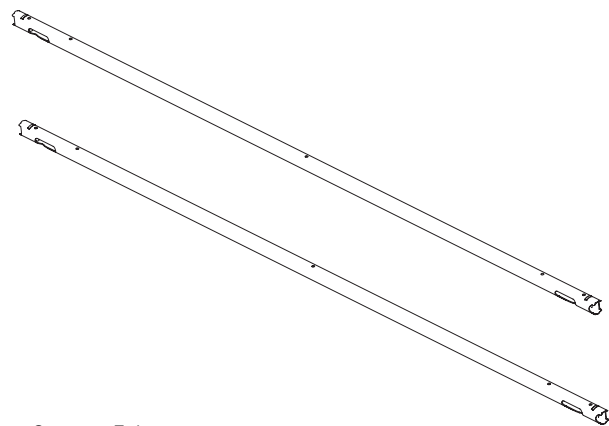
Footbar Castings  
(Optional)



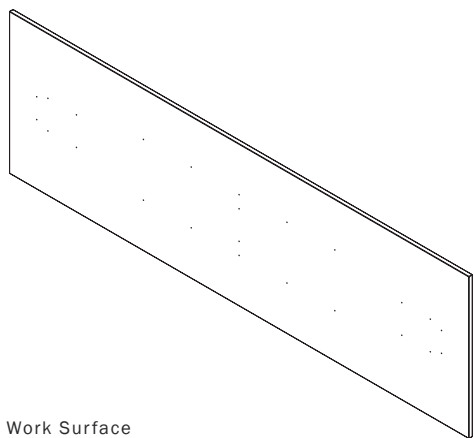
Footbar Tubes  
(Optional)



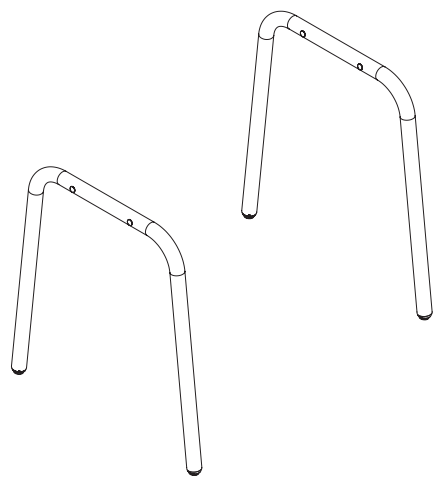
Mobile Table Legs  
(Optional)



Support Tubes



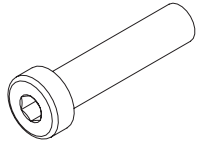
Work Surface



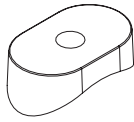
Fixed Table Legs  
(Optional)

# 1. Connect Support Tubes to Frame Legs

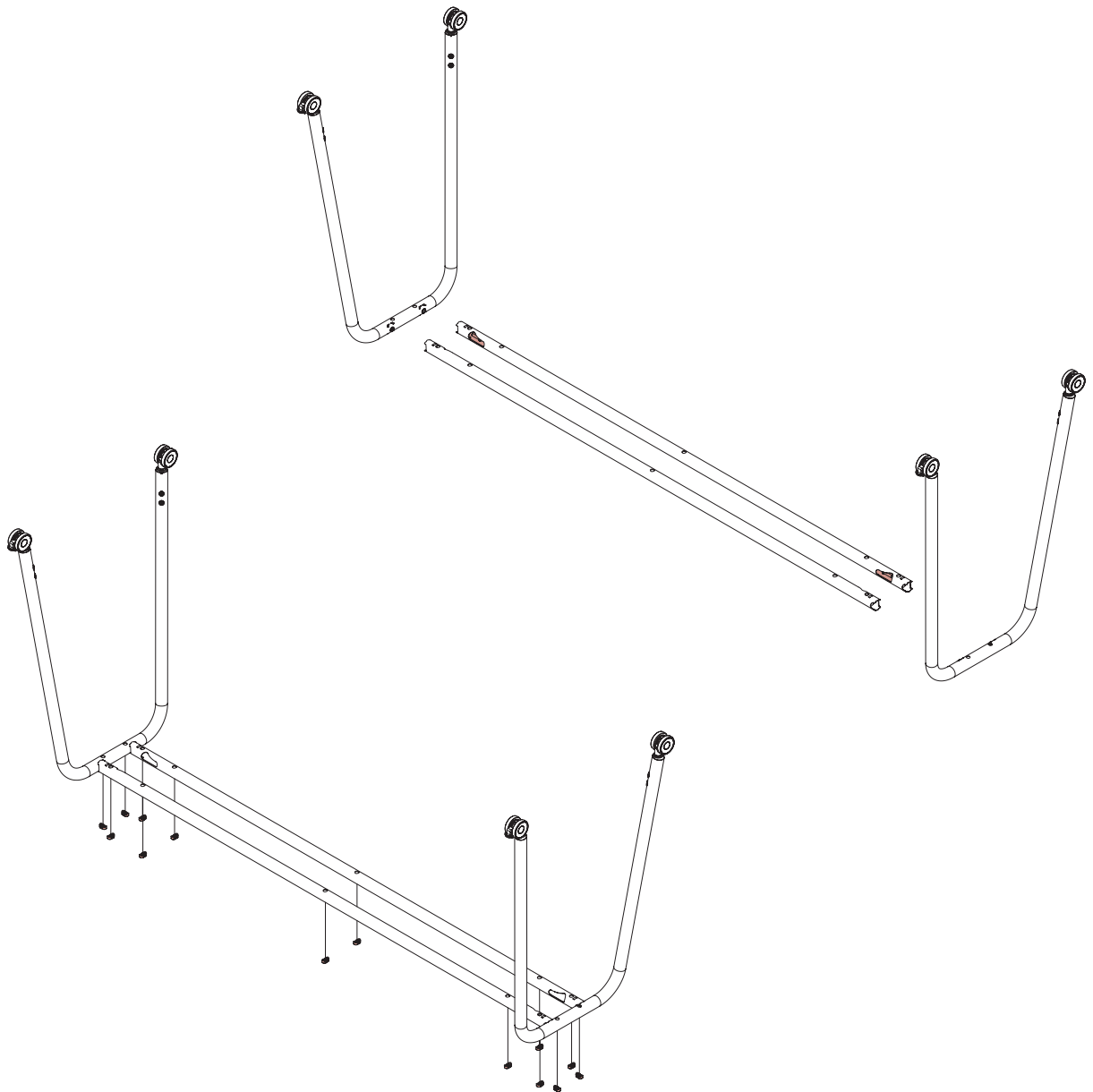
For tables 30" or deeper, locate the two support tubes and place them so that the large access cuts are both facing inwards towards each other and the side with the larger set of holes is facing upwards. Fasten each support tube on both ends with an M8x35mm screw (0002629) to the nut located in the bent tube frame legs. Insert a rubber spacer (0002813) into each of the smaller set of holes on the opposite side of the frame. Tables that are 24" deep will follow this same sequence but with a single support tube.



Screw, M8-1.25 x 35MM  
(0002629)

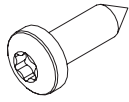


Space, Selab Work/Meet/  
Might MT  
(0002813)

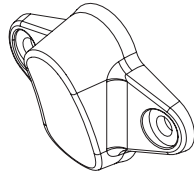


## 2. 24" D Support Tube Supports

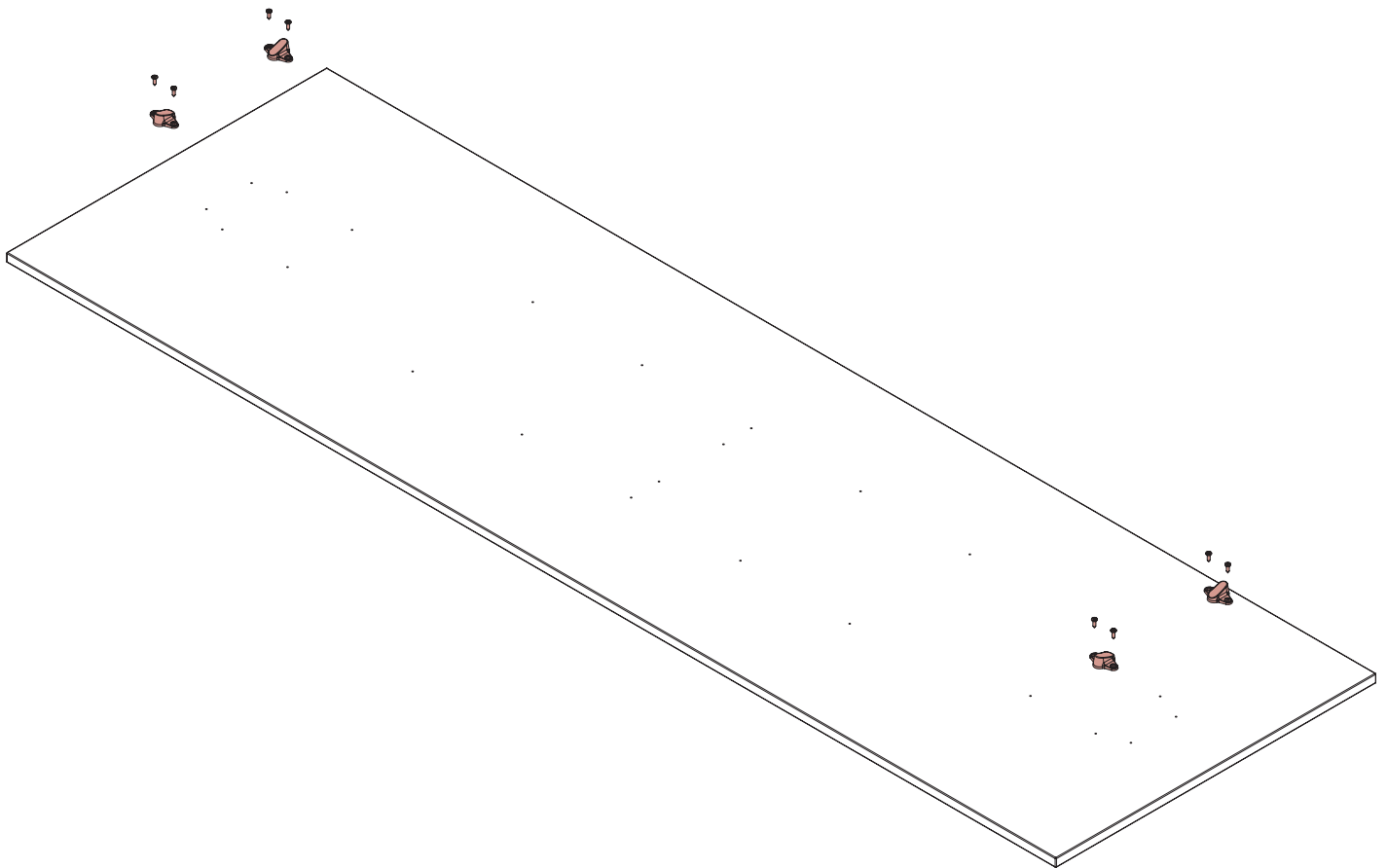
For tables that are 24" in depth, secure Qty: 4 of the side support pieces (0002814) to the underside of the worksurface using QTY: 2 of the #10 x 5/8" wood screws (0002148) per support.



Screw #10 x 5/8 BK, Torx  
(0002148)  
x2

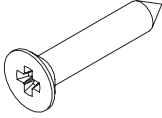


Side Support, Selab  
(0002814)  
Optional  
x4

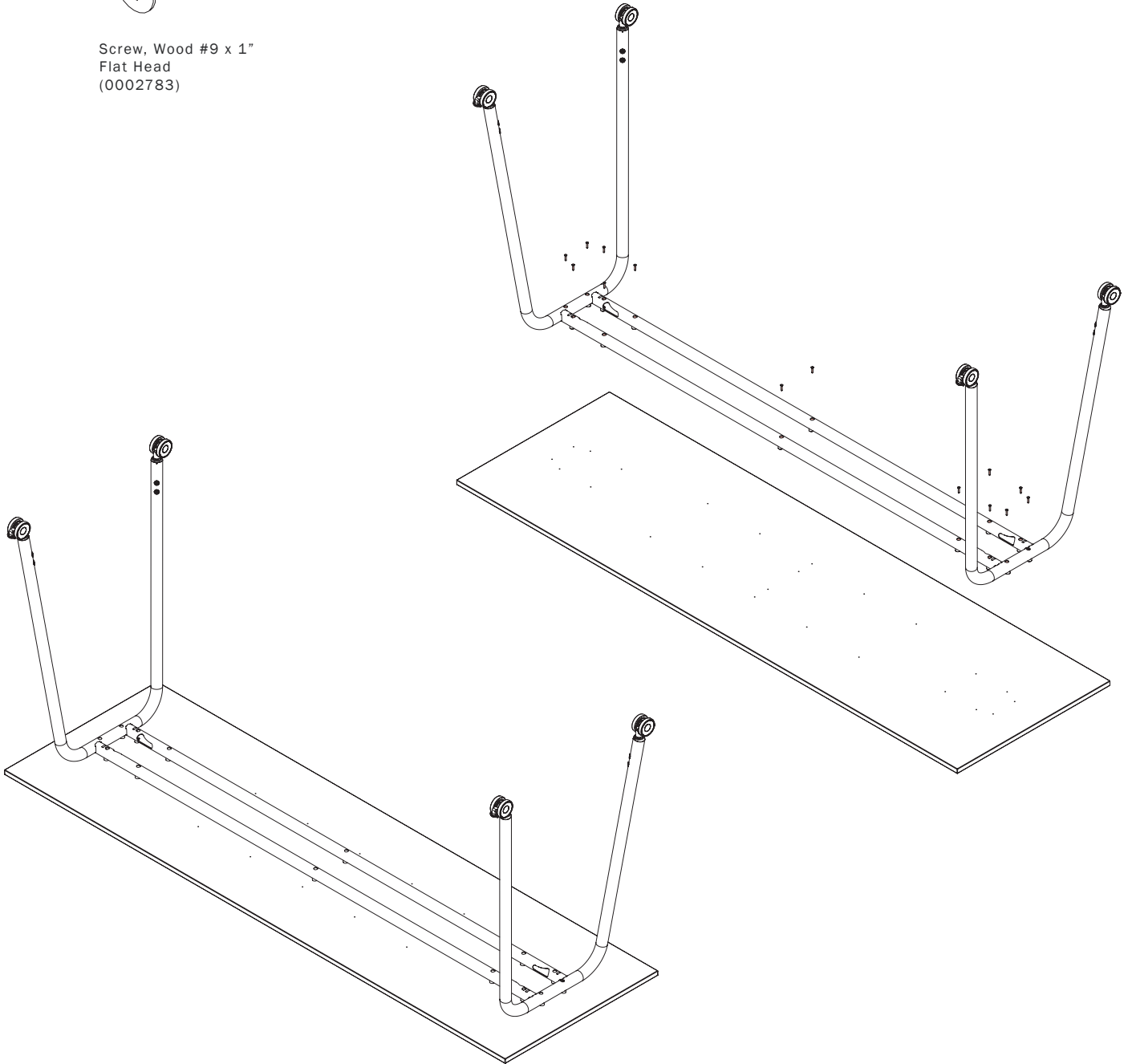


### 3. Attach Frame to Work Surface

Place the work surface on a clean blanket or carpet, ensuring that the area is free of debris. Flipping the frame upside down, align the pilot holes in the top with the holes in the frame. Secure the frame to the work surface using the #9 x 1" wood screws (0002783).

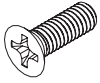


Screw, Wood #9 x 1"  
Flat Head  
(0002783)

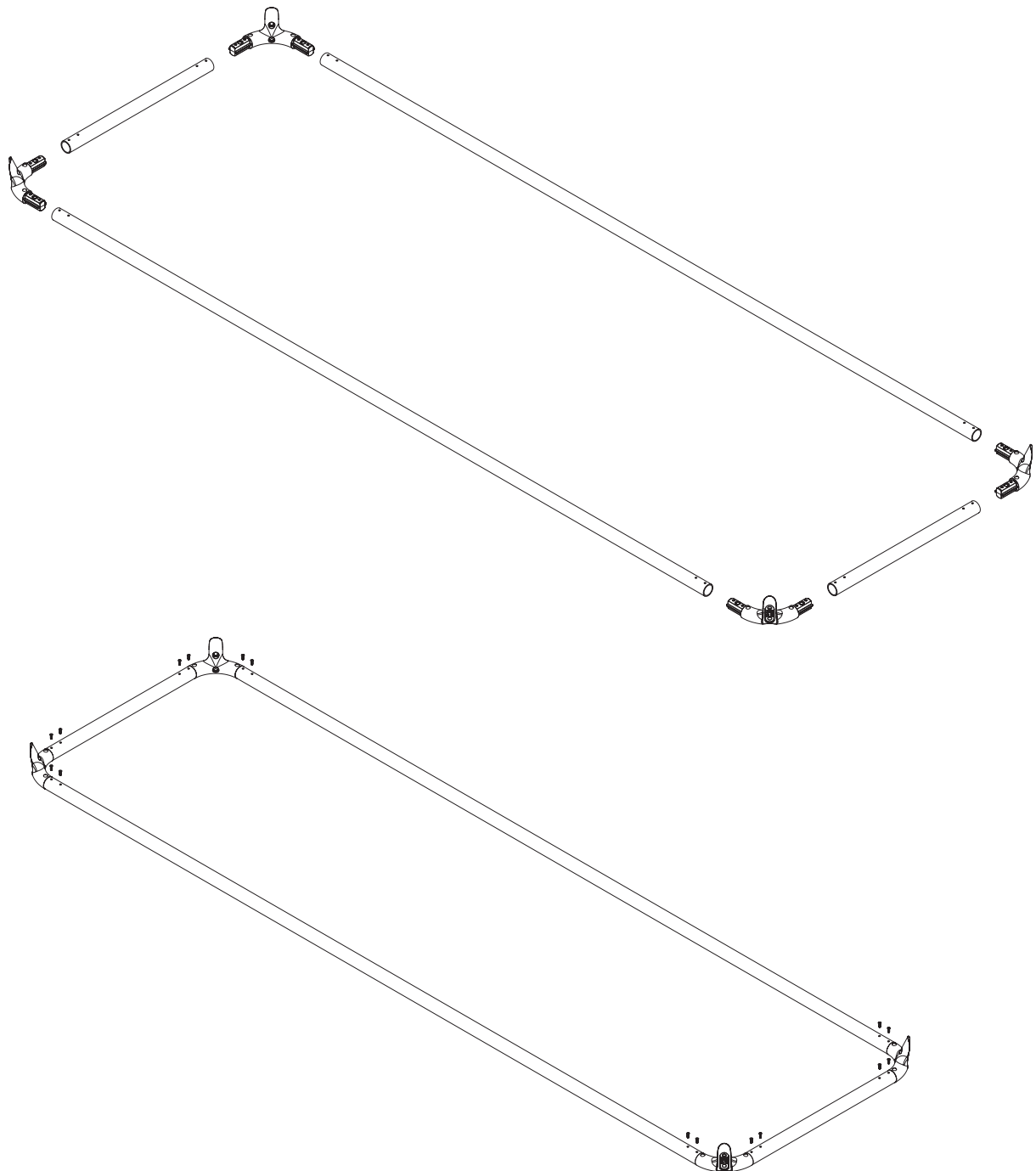


## 4. Assemble Optional Foot Bar

Lay out the foot bar tubes for pre-assembly, ensuring that all of the holes are facing upwards. Insert the corner castings into the tubes so that the holes in the tubes align with the holes in the castings. Secure the castings to the tube using Qty: 4 of the M4 x 12mm flat head screws (0000879) per casting.

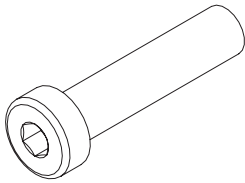


Screw M4-0.7 x 12MM  
Flat Head  
(0000879)  
x4

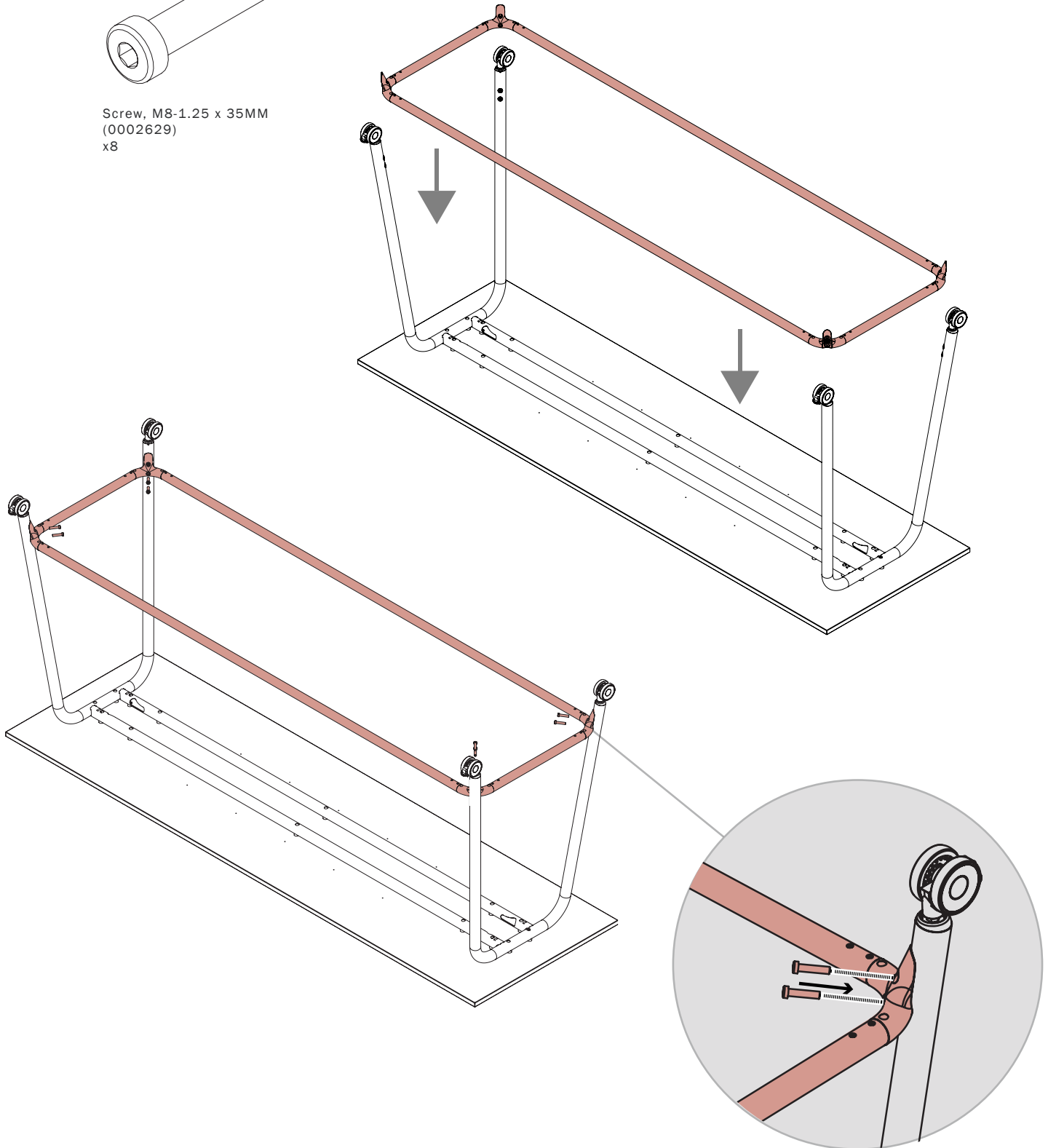


## 5. Attach Optional Foot Bar

Carefully lower the assembled foot bar into place inside the legs of the table until the holes in the corner castings align with the nuts located in the bent tube frame legs. Secure the footbar to the leg frame using Qty: 2 of the M8 x 35mm screws (0002629) per corner.



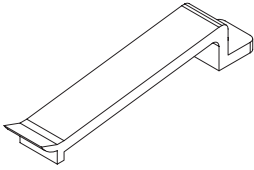
Screw, M8-1.25 x 35MM  
(0002629)  
x8



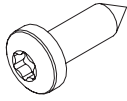


## 6. Attach Cable Clips

Secure single sided cable clips (486911) to the undersurface with Qty: 1 #10 x 5/8 Pan Head screw (0002148) per clip.



Clip, Single Side  
Wire Manager  
(486911)



Screw #10 x 5/8 BK, Torx  
(0002148)

