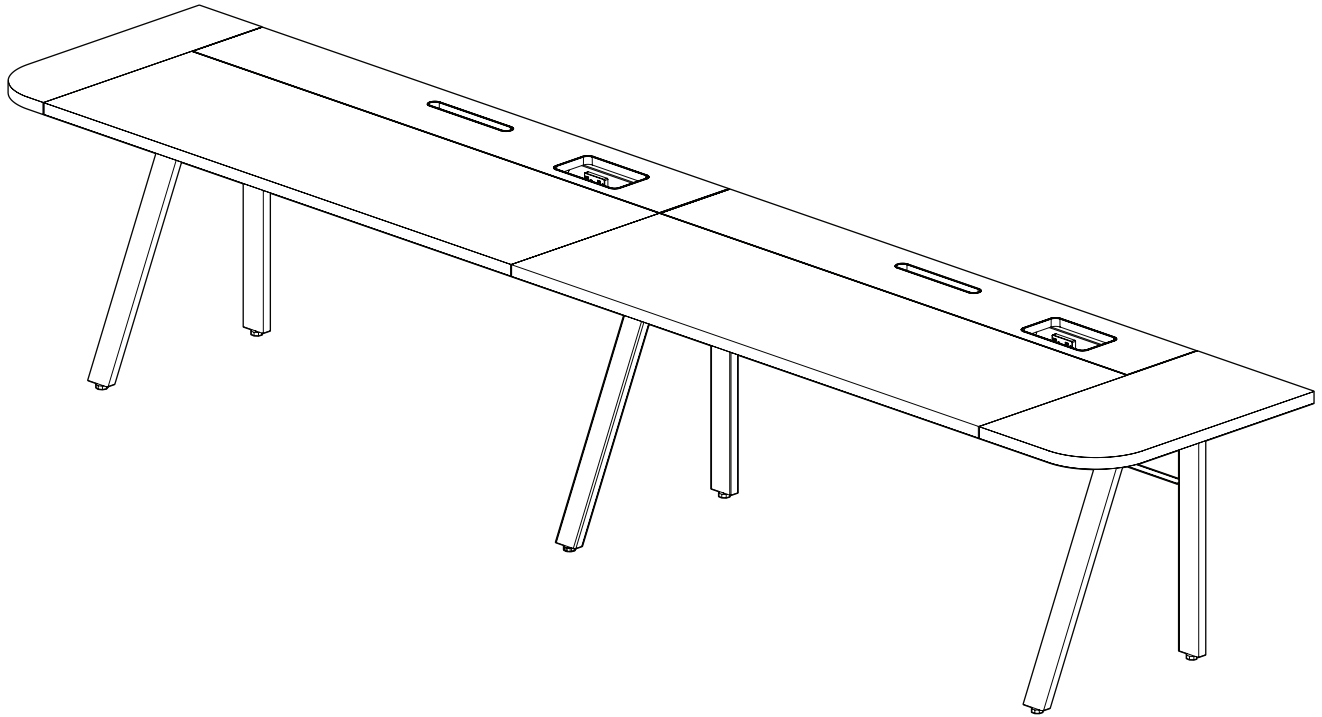


ASSEMBLY

Tonic Single Sided Workbench



View Digitally

Important Safety Instructions

This product is for commercial use only.

When using an electrical furnishing, basic precautions should always be followed, including the following:

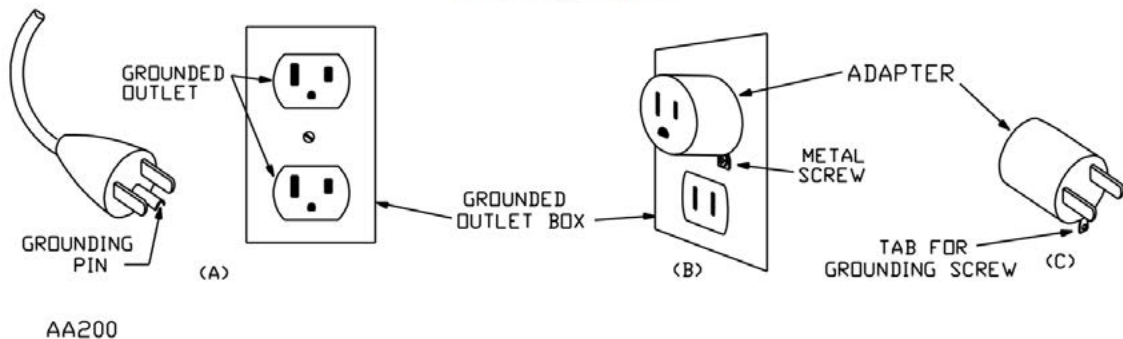
Read all instructions before using (this furnishing).

WARNING -

To reduce the risk of burns, fire, electric shock, or injury to persons:

1. Unplug from outlet before putting on or taking off parts.
2. Close supervision is necessary when this furnishing is used by, or near children, invalids, or disabled persons.
3. Use this furnishing only for its intended use as described in these instructions. Do not use attachments not recommended by the manufacturer.
4. Never operate this furnishing if it has a damaged cord or plug, if it is not working properly, if it has been dropped or damaged, or dropped into water.
5. Keep the cord away from heated surfaces.
6. Do not use outdoors.
7. Do not operate where aerosol (spray) products are being used or where oxygen is being administered.
8. To disconnect, turn all controls to the off position, then remove the plug from outlet.
9. **WARNING: Risk of Electric Shock –** Connect this furnishing to a properly grounded outlet only. See Grounding Instructions (Figure 77.1).
10. Mount furnishings at the correct height.


Figure 77.1
Grounding methods



Save These Instructions

OPERATING INSTRUCTIONS – Please refer to the provided Installation Instructions and User Guide.

POLARIZED PLUG INSTRUCTIONS – To reduce the risk of electric shock, this furnishing has a polarized plug (one blade is wider than the other). This plug will fit in a polarized outlet only one way. If the plug does not fit fully in the outlet, reverse the plug. If it still does not fit, contact a qualified electrician to install the proper outlet. Do not change the plug in any way.

SERVICING OF DOUBLE-INSULATED PRODUCTS – In a double-insulated product, two systems of insulation are provided instead of grounding. No grounding means is provided on a double-insulated product, nor is a means for grounding to be added to the product. Servicing a double-insulated product requires extreme care and knowledge of the system, and is to be done only by qualified service personnel. Replacement parts for a double-insulated product must be identical to the parts they replace. A double-insulated product is marked with the words “DOUBLE INSULATION”, “DOUBLE INSULATED”, or .

This product is for use on a nominal 120-V circuit. Make sure that the product is connected to an outlet having the same configuration as the plug. No adapter should be used with this product.

Hardware



#10 X 1" WOOD SCREW
(0002147)



#8 X 3/4" WOOD SCREW
(122810)



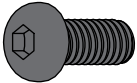
8-32 x 1/4" Screw
(121535)



8-32 x 1/4" Thread
Cutting Screw
(121538)



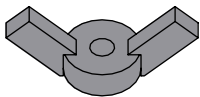
LOCK WASHER
(121406)



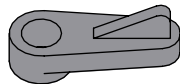
M6 1.00 x 12mm
Screw (125285)



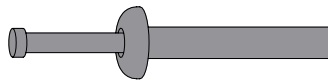
8-32 NUT
(117011)



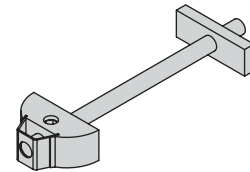
Wing Nut
(888101)



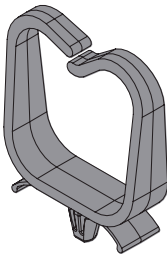
INFILL CLIP
(486915)



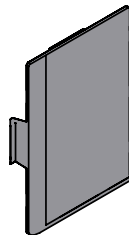
Floor Anchor
(480136)



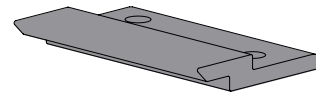
Tite Joint
(0002294)



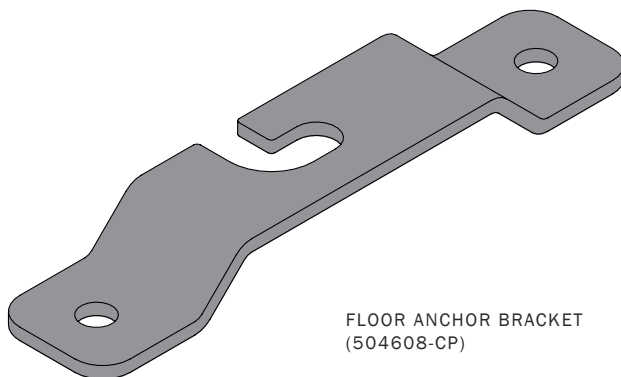
DATA MANAGER CLIPS
(0000003)



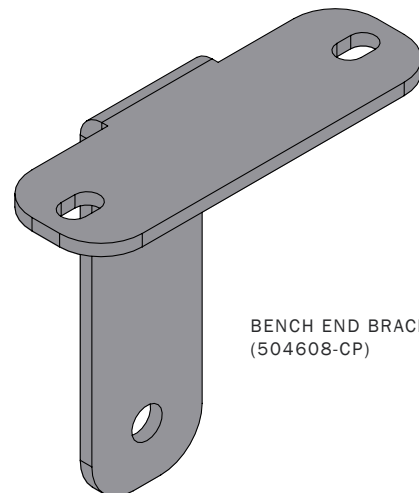
BLANK DATA PORT
(0001367)



Z-CLIP
(0000158)



FLOOR ANCHOR BRACKET
(504608-CP)

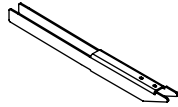


BENCH END BRACKET
(504608-CP)

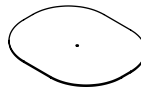
Tonic Single Sided Workbench Components



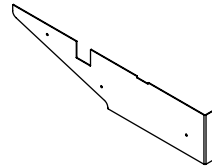
SPLICE PLATE



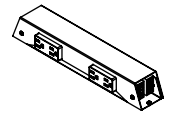
END BRACKET



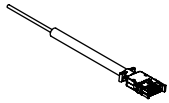
CABLE SLAT



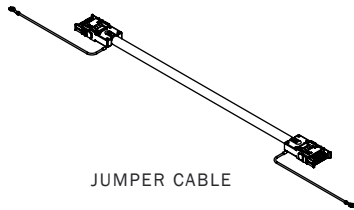
END COVER (RIGHT SHOWN)



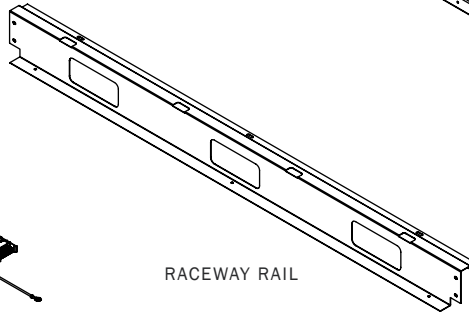
POWER BRICK



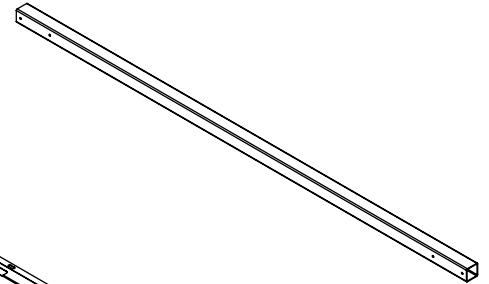
INFEEED



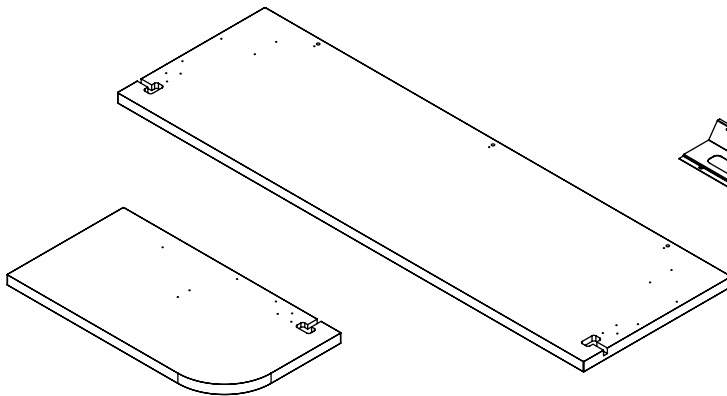
JUMPER CABLE



RACEWAY RAIL

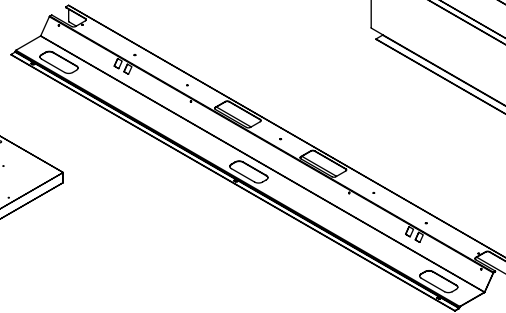


TOP SUPPORT RAIL

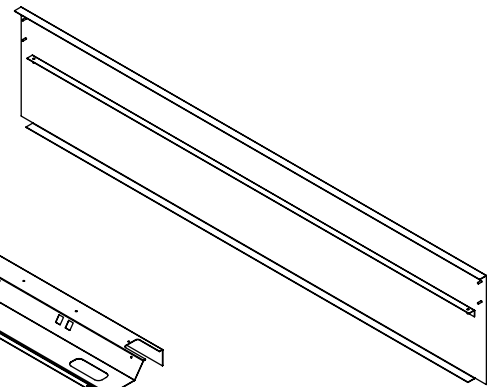


END SEGMENT (RIGHT SHOWN)

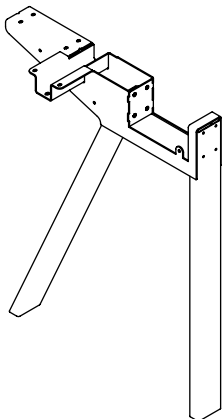
WORK SURFACE



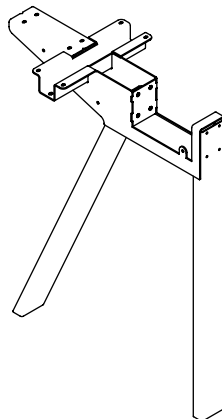
POWER RACEWAY



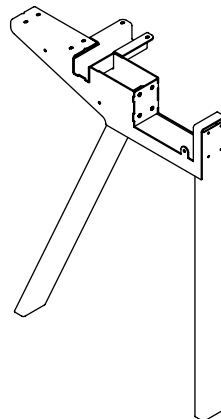
REAR RACEWAY RAIL



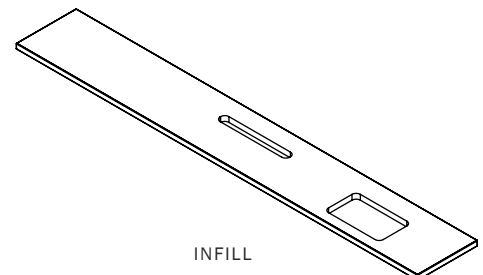
LEFT LEG ASSEMBLY



MID LEG ASSEMBLY

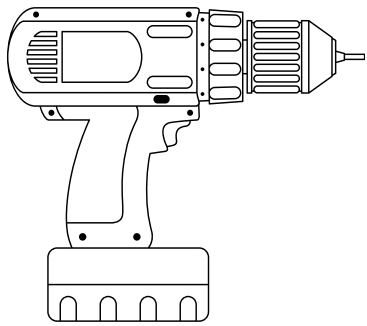


RIGHT LEG ASSEMBLY



INFILL

Tools



Electric Drill



P2 Phillips
Driver Bit



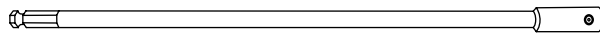
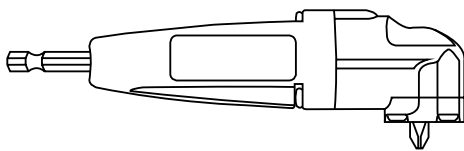
4mm Hex Drill/
Driver Bit



6mm Hex Drill/
Driver Bit



Torx T-25
Driver Bit

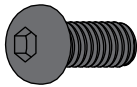


Additional tools such as a 90 Degree Bit and an 18" Extension are helpful for some steps

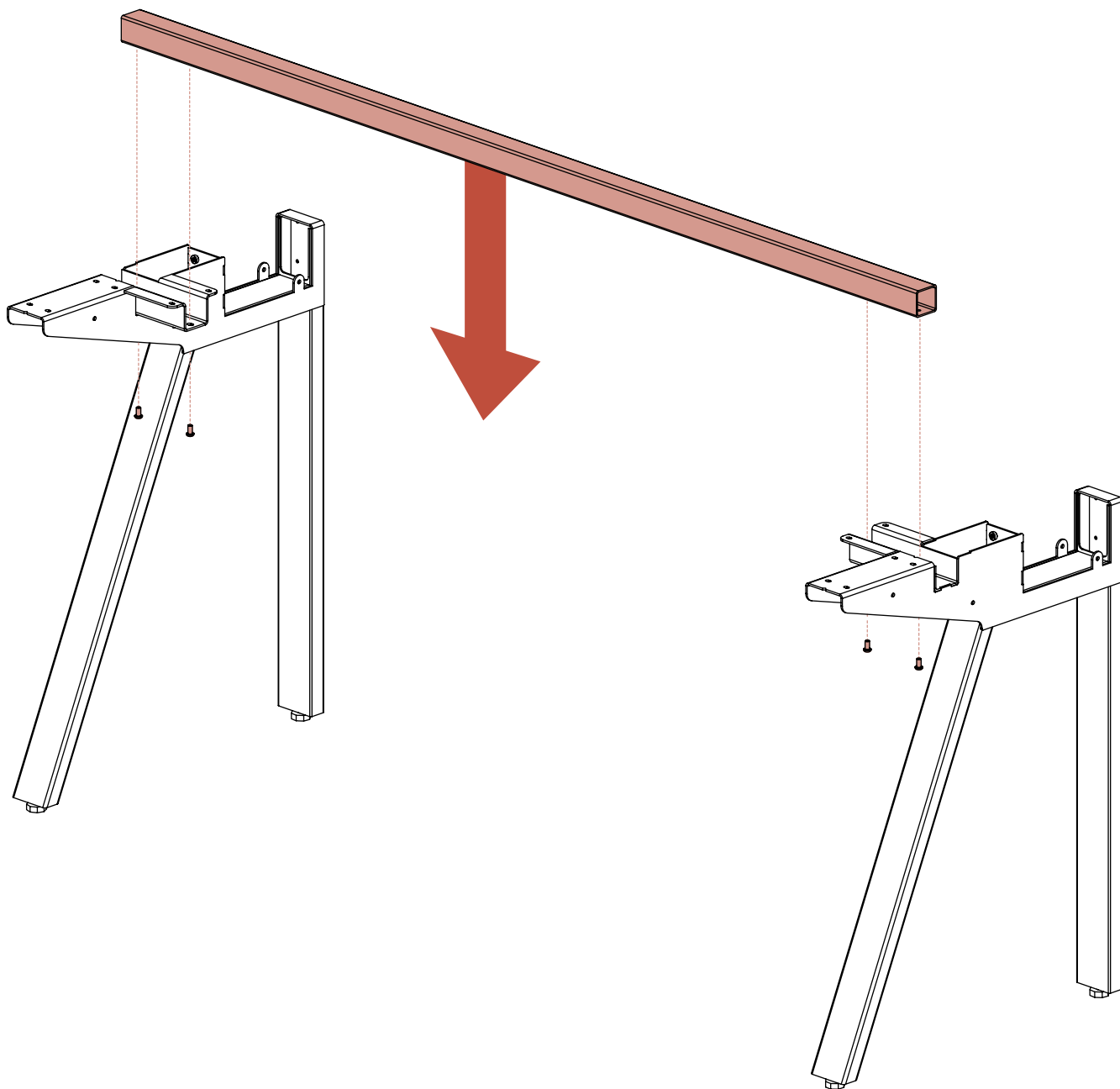
*No torque or ball bits should be used

1. Top Support Rail

Orient Leg Assemblies upright and loosely attach top support rails with 4 screws (125285) per rail. When assembling 2 or more segments position the remaining Leg Assemblies and loosely attach the additional top support rails. Use left legs on the left, right legs on the right, and mid legs in-between.

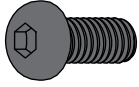


M6 1.00 x 12mm
Screw (125285)



2. Raceway Rail

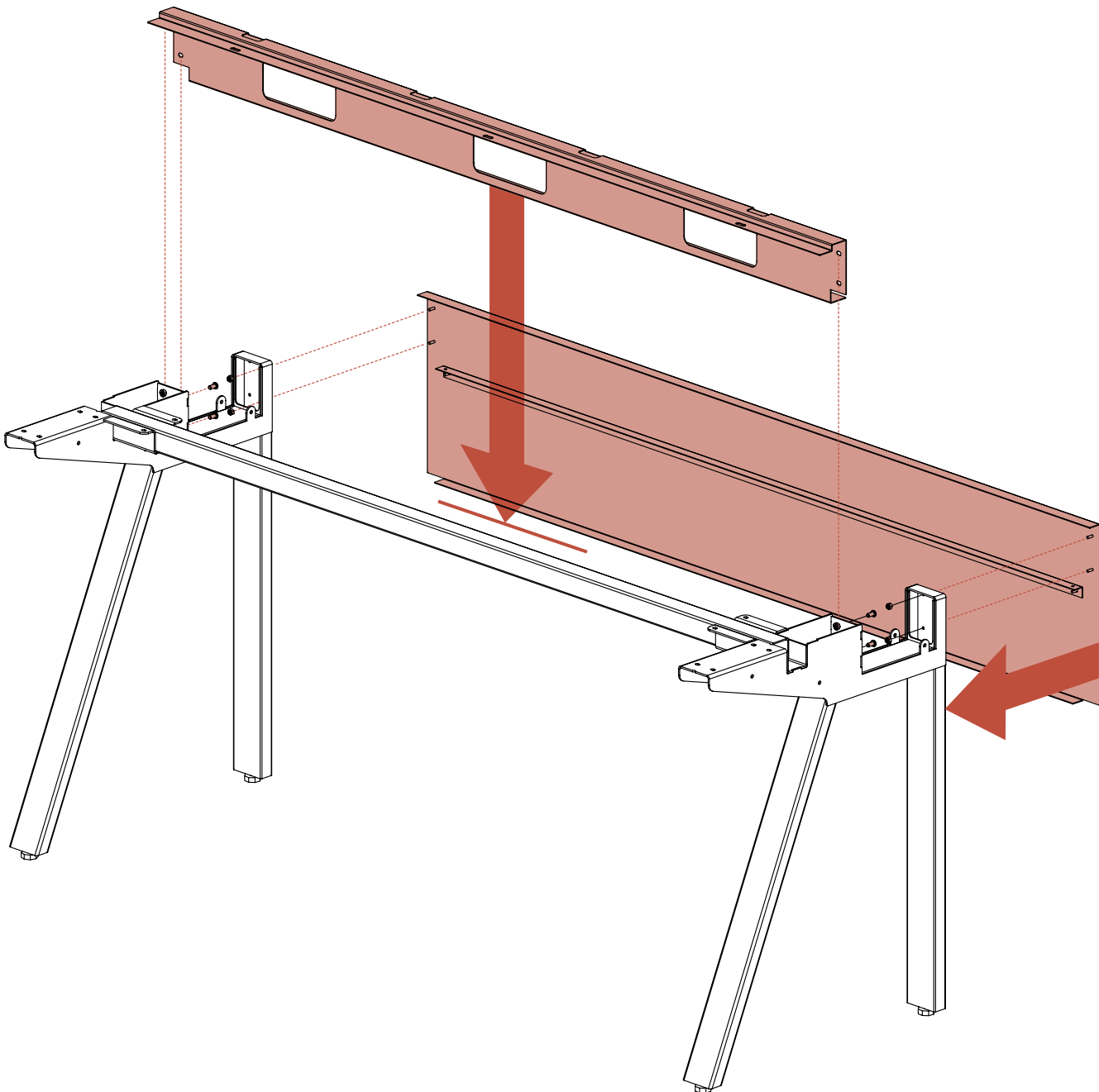
Loosely attach raceway rail with 4 screws (125285) per rail.
Loosely attach rear raceway rail with 4 nuts (117011) per rail.



M6 1.00 x 12mm
Screw (125285)



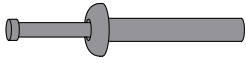
8-32 Nut
(125285)



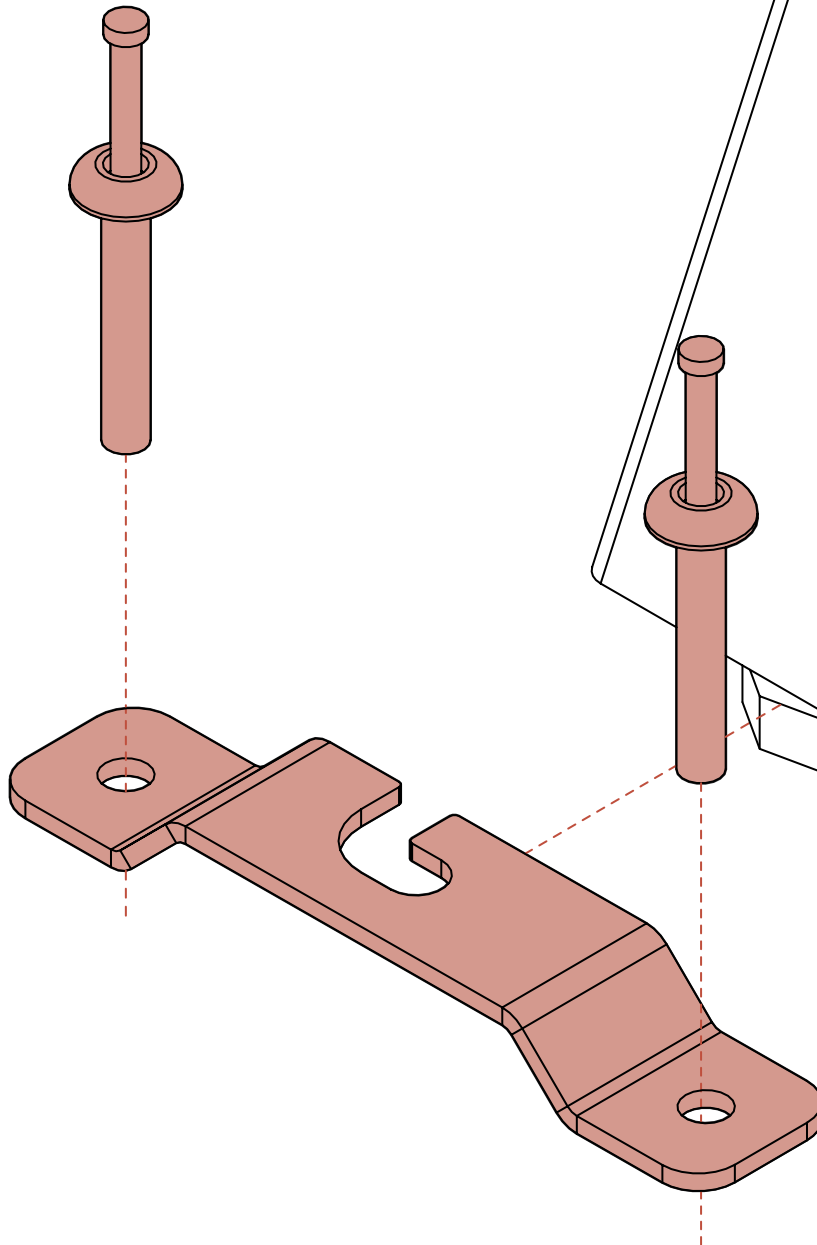
3.

Attach Anchors (Hardwired Tables Only)

Attach bench end bracket to left and right leg assemblies with 2 screws (125285).

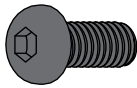


Floor Anchor
(480136)

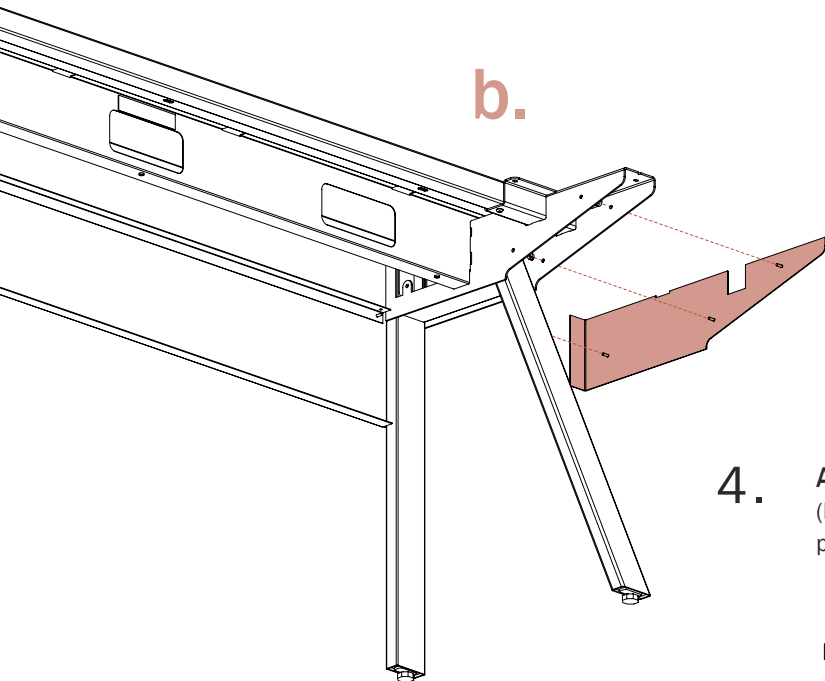
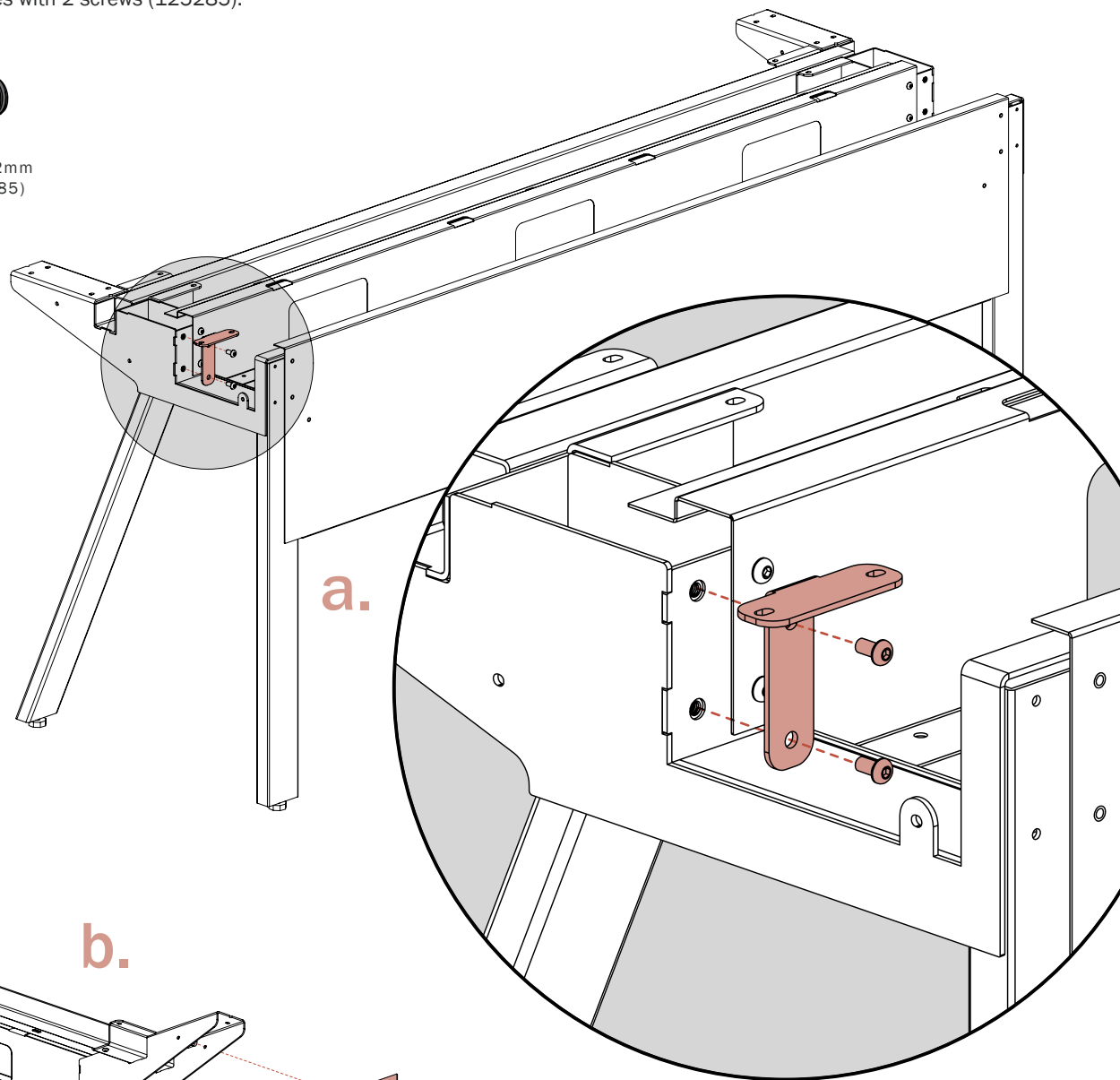


4. Attach End Cover

(a) Attach bench end bracket to left and right leg assemblies with 2 screws (125285).

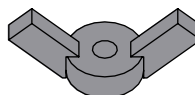


M6 1.00 x 12mm
Screw (125285)



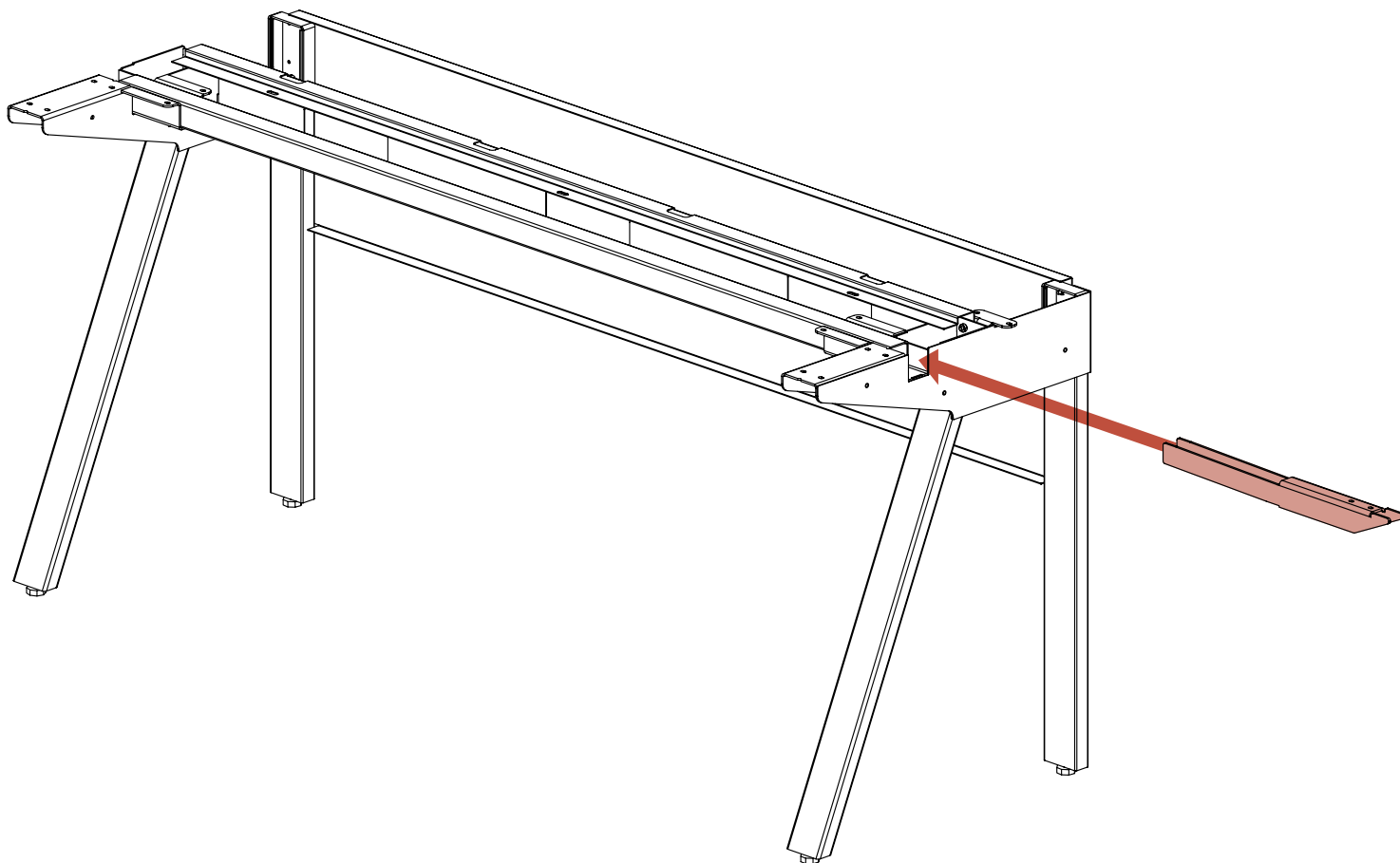
4. Attach End Cover (Aisle and Extension Ends Only)

(b) Attach end covers (if included) to legs with 3 wingnuts (888101) per end cover. Hand Tighten and avoid over tightening).



Wing Nut
(888101)

5. End Bracket (Extension Ends Only)
Insert End Bracket into end of top support rails.

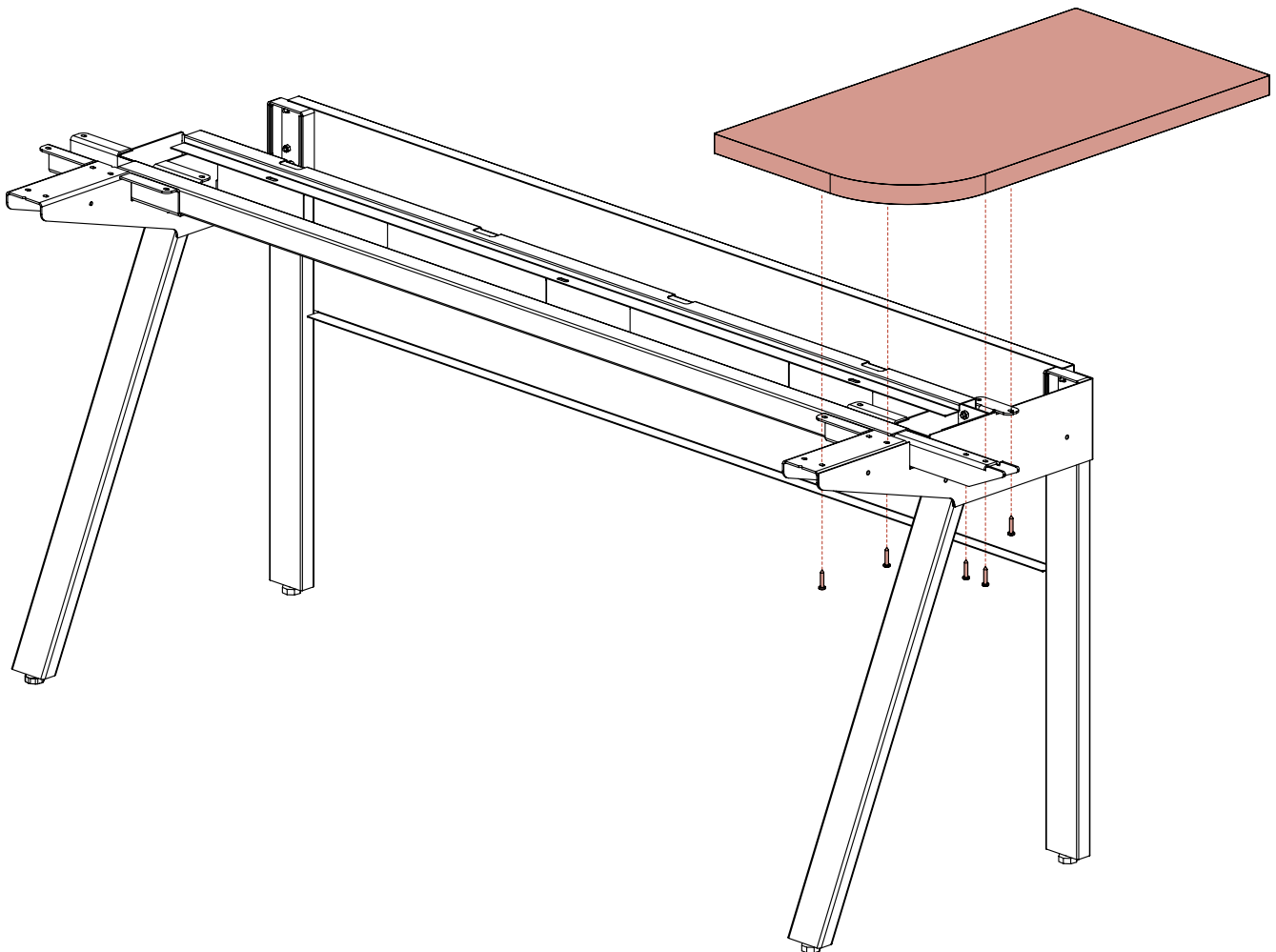


6. Add End Segment

Align and fasten end segment to right leg assembly with 3 screws (0001247). Fasten Extension End segment to End Bracket with 2 screws (0001247) per bracket (Extension End Only).

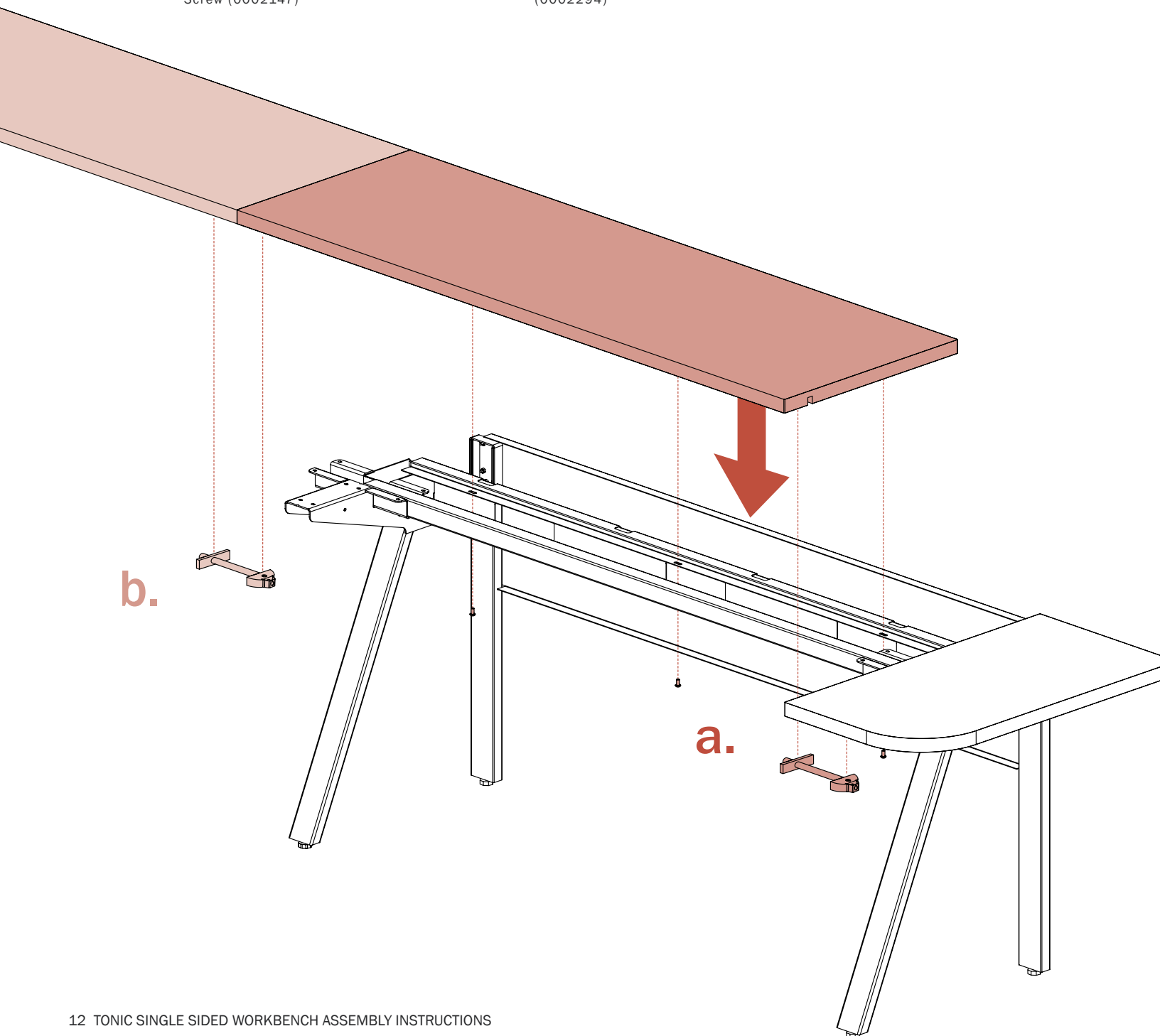
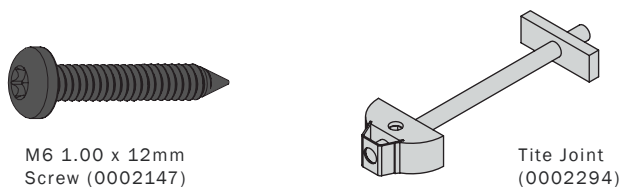


M6 1.00 x 12mm
Screw (0002147)



7. Secure Surfaces and Alignment

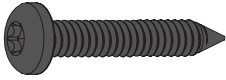
- (a) Place work surface in position and attach to the right end segment using a Tite Joint, tightening with a 4mm hex bit. Attach the work surfaces to the raceway rails loosely with M6x12mm screws (125285).
- (b) Attach any additional work surfaces to the previous work surface using a Tite Joint. Attach the work surfaces to the raceway rails loosely with M6x12mm screws (125285). Repeat step 7b until all work surfaces are attached. Attach the final end segment (Step 6) to the final work surface with a Tite Joint.



8. Secure Surfaces and Alignment

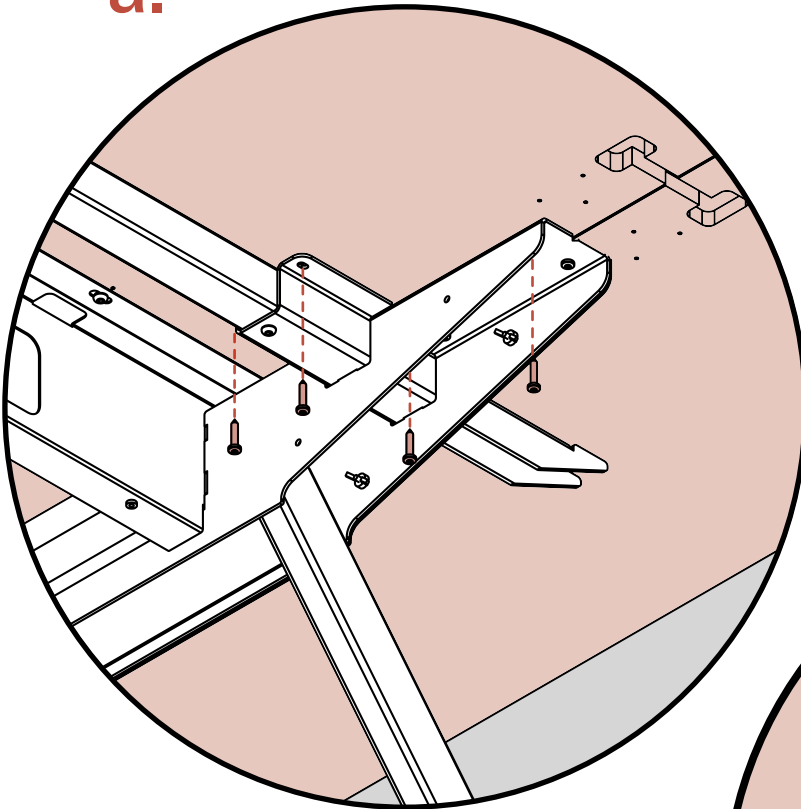
(a) Start at the first work surface you loosely attached. Align the work surface then use M6 1" screws (0002147) to secure the work surface to the legs. Check and re-level each table segment as necessary. Tighten M6 screws. Repeat step 8 working your way down the workbench table segments from the previous table segment. Repeat step 6 to attach the final end segment with 1" screws (0002147).

(b) Completely secure splice plates to surfaces with 1" screws (0002147).

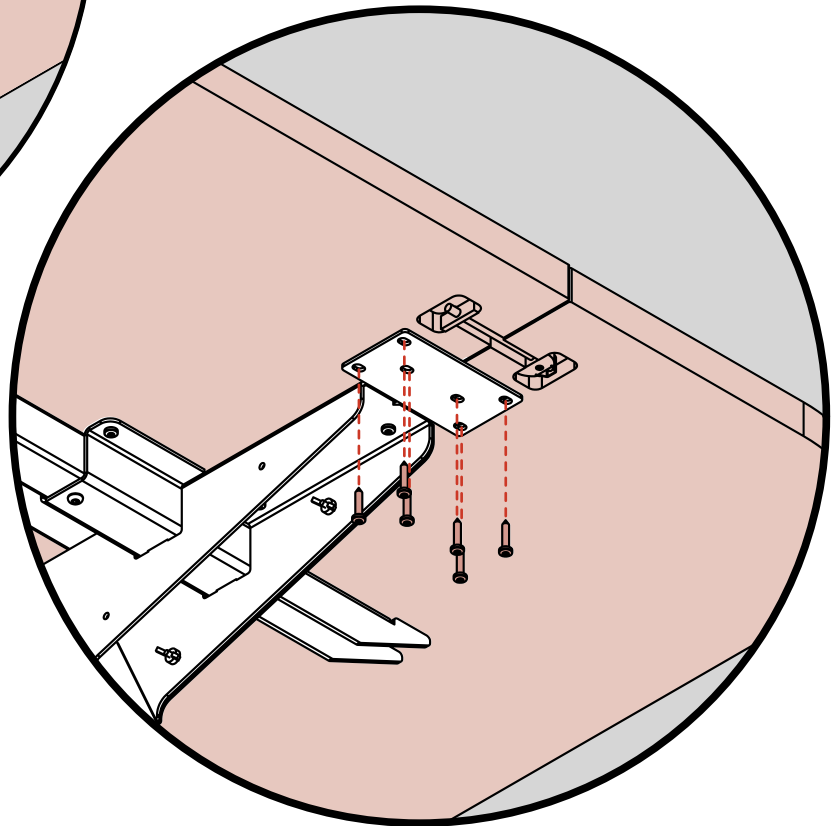


M6 1.00 x 12mm
Screw (0002147)

a.



b.



9. Attach Power Bricks

- (a) Attach power bricks according to install plan to power raceway using thread cutting screw (121538) with washer (121406). Note: Power bricks should always be on the right side for 2 duplexes per user.
- (b) Push data manager clips (0000003) into provided holes in top of power raceway.



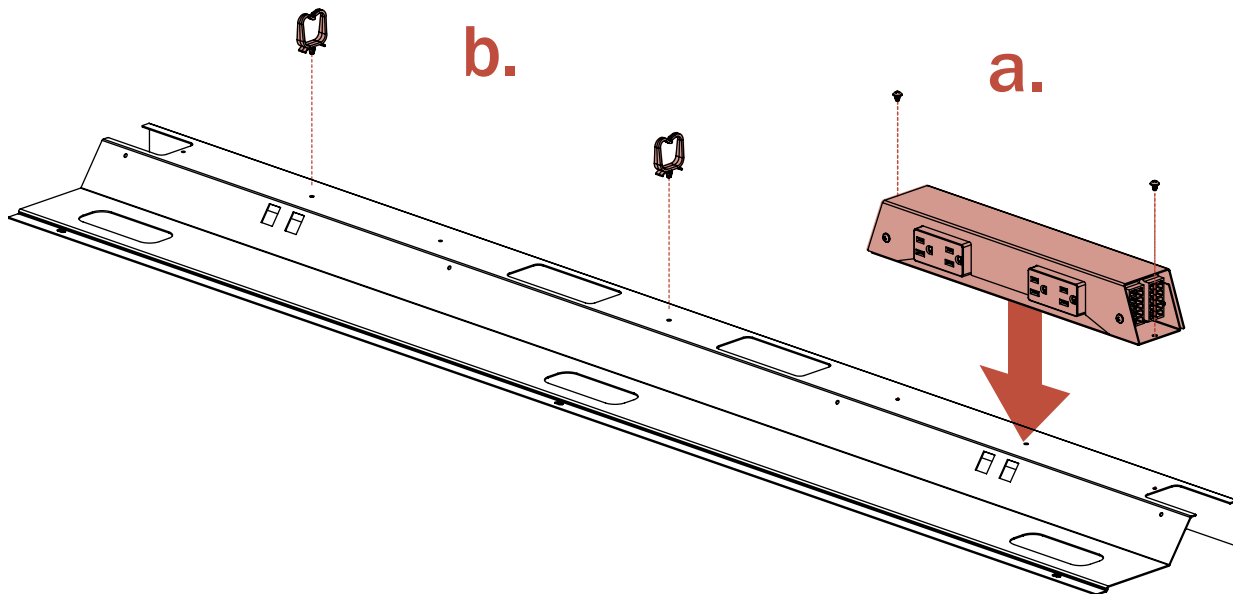
8-32 x 1/4" Screw
(121535)



Lock Washer
(121406)



DATA MANAGER CLIPS
(0000003)



10. Install Power / Ground Jumper Cables

WARNING - All bolted connections must be securely fastened to insure that furnishings are mechanically interconnected before Raceway installation.

Tip: Adder Raceways have one electrical jumper which must connect to previous Power Raceway. As a result, Adder Power Raceways must be oriented correctly in order to connect to the adjacent Power Raceway. Exception: Tables with a single raceway do not have a connecting jumper.

(a) Place the power raceways into the center of the intended bench segments. Attach the Power Raceways to the Raceway Rails with 6 screws (121535) per power raceway.

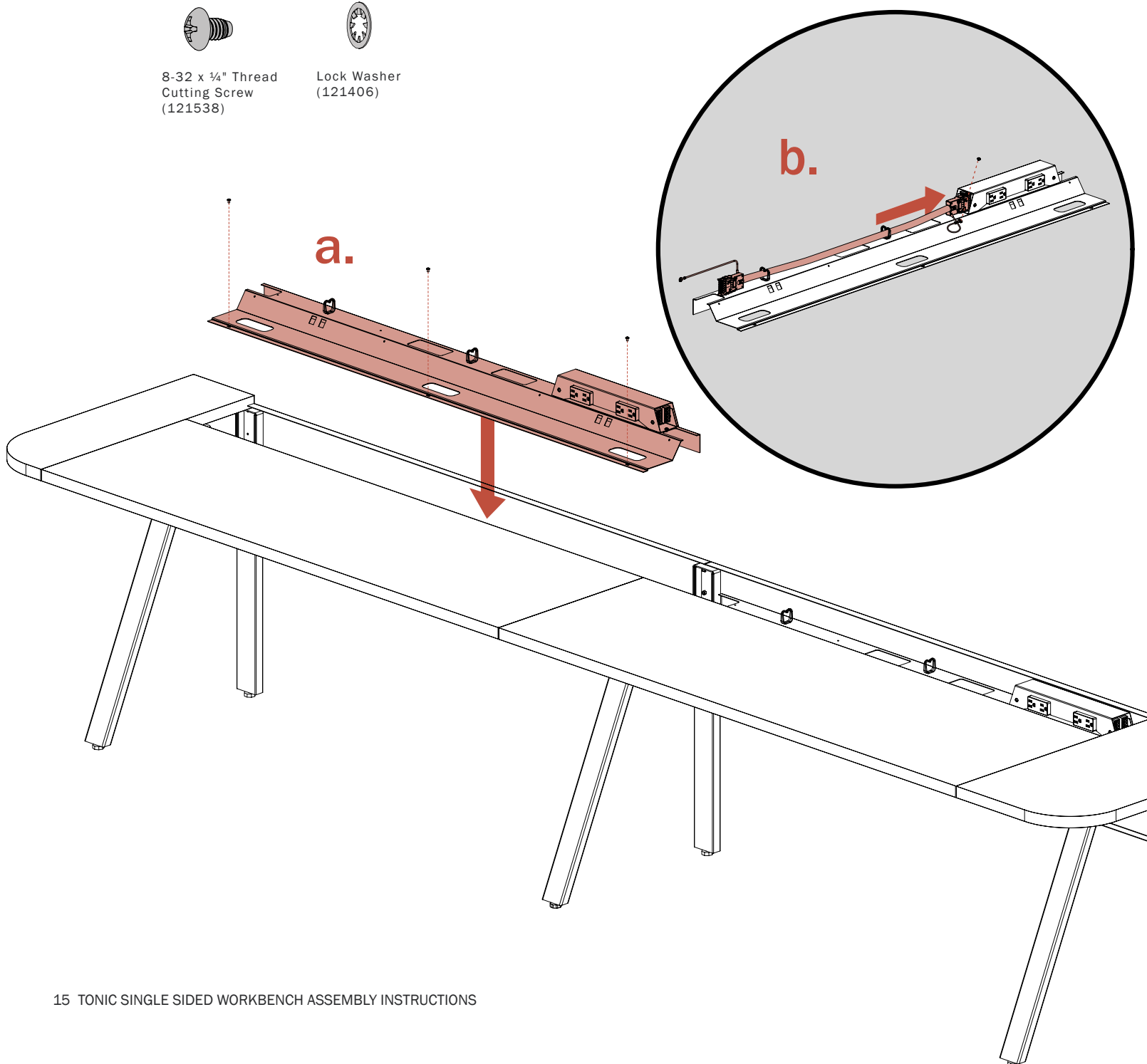
(b) Create electrical connection between Power Bricks by connecting the Jumper Cables or Infeed to the end of power bricks. Ground the jumper cable to the power raceway with the provided screws (121538) and washers (121406). Check each connection by slowly pulling on each cable after making a connection.



8-32 x 1/4" Thread
Cutting Screw
(121538)



Lock Washer
(121406)



11. Add infills

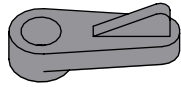
Turn over the infill (bottom side facing up) and drive supplied infill clips (486915) into all predefined pilot holes with #8 x 3/4" screws (122810) as shown below .

Drive supplied z-clips on all predefined pilot holes with #8 x 3/4" screws (122810) as shown below.

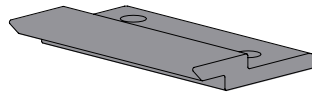
DO NOT USE THE 1" LONG SCREWS THAT ARE USED TO SECURE THE PRIMARY DESK SURFACES



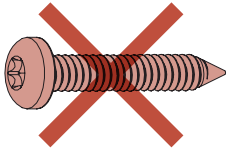
#8 X 3/4" WOOD SCREW
(122810)



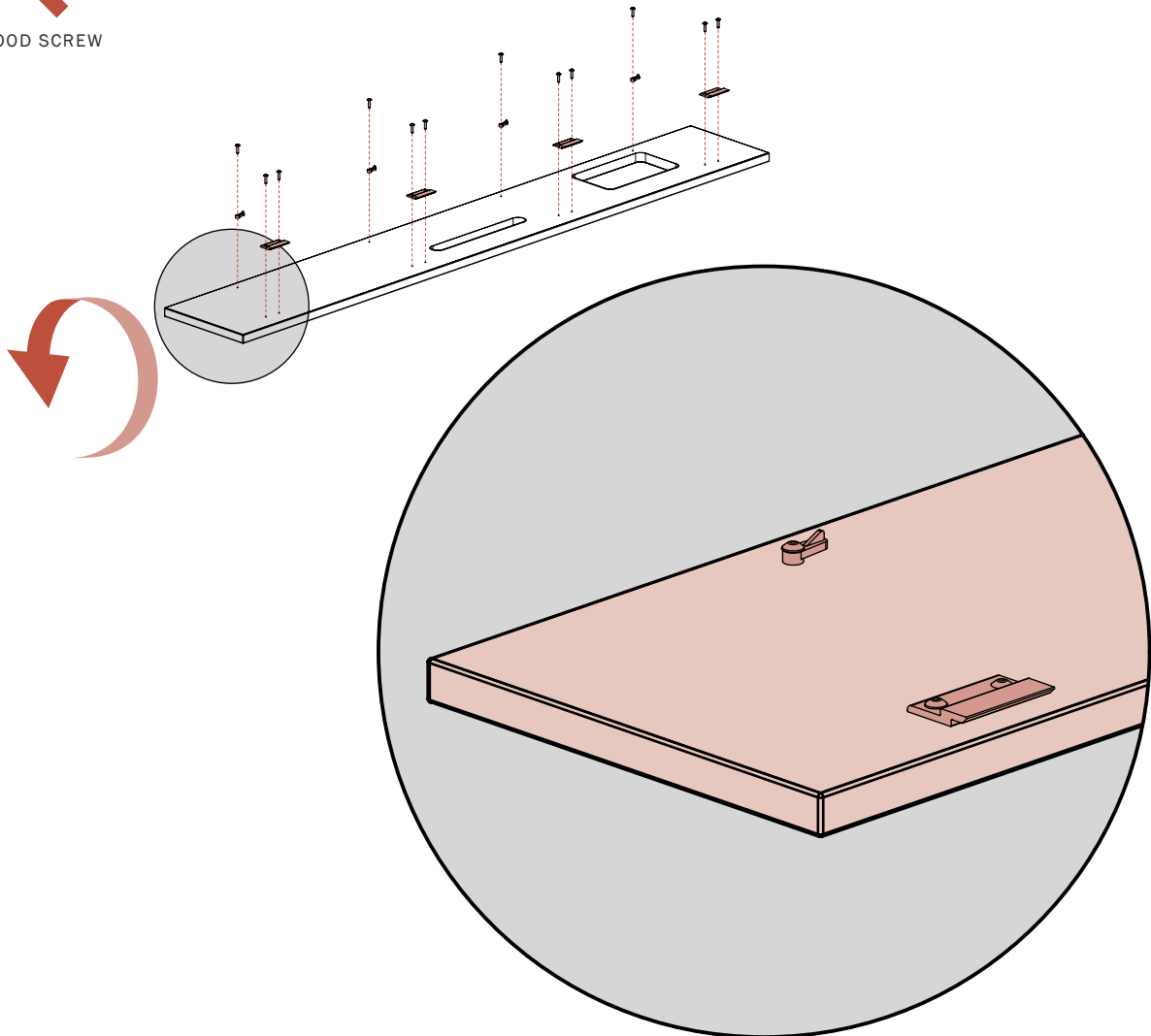
INFILL CLIP
(486915)



Z-CLIP
(0000158)

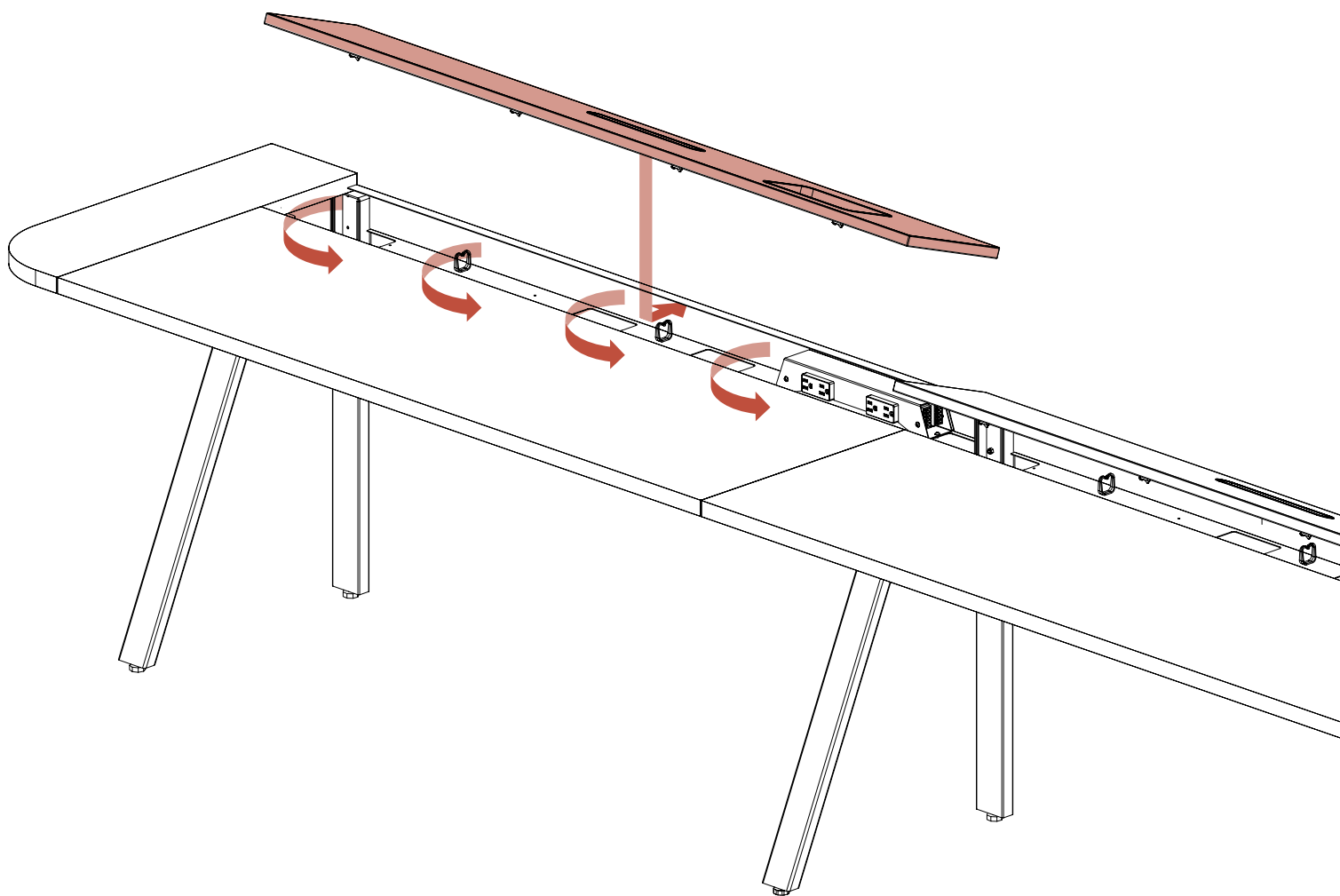


#10 X 1" WOOD SCREW
(0002147)



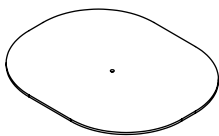
12. Install Infill

Orient Infill components above Power Raceways in positions that allow users access to desired outlets on the power. Slide the Z-clips into the rear raceway rail then drop the clips through the holes on the Raceway Rails. Slightly turn all clips from underneath to secure Infill component in place.



13. Secure Data Cables

Cable Slats go underneath the Power Raceway to keep data cables from hanging below the raceway. To install, rotate in between raceway rails until the fit is snug and secure



CABLE SLAT

